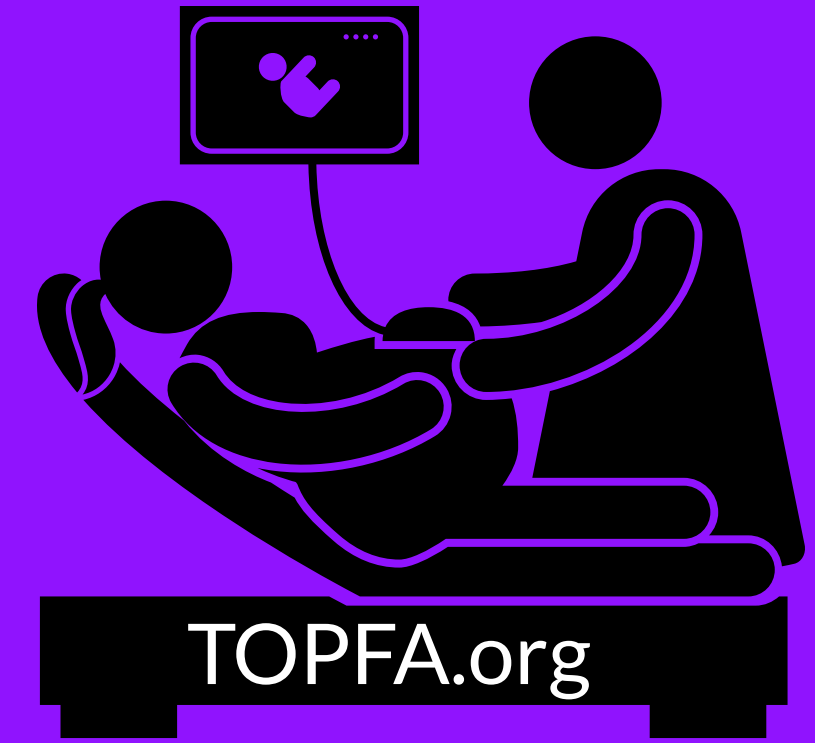


TOPFA by the Numbers



How many pregnancies are affected?

Slightly greater than 3% of pregnancies in the developed world have been reported to have significant abnormalities.



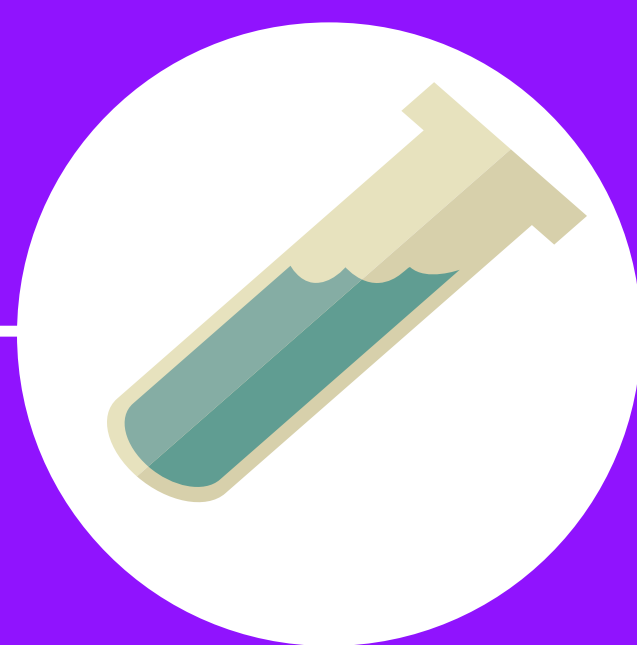
Decision-Making Path

■ Affected (3%) ■ Unaffected (97%)



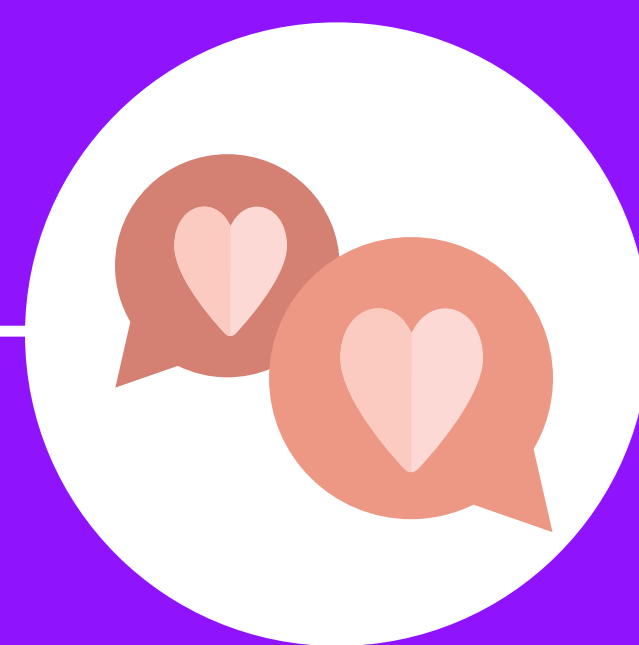
#1

Identification



#2

Further Testing



#3

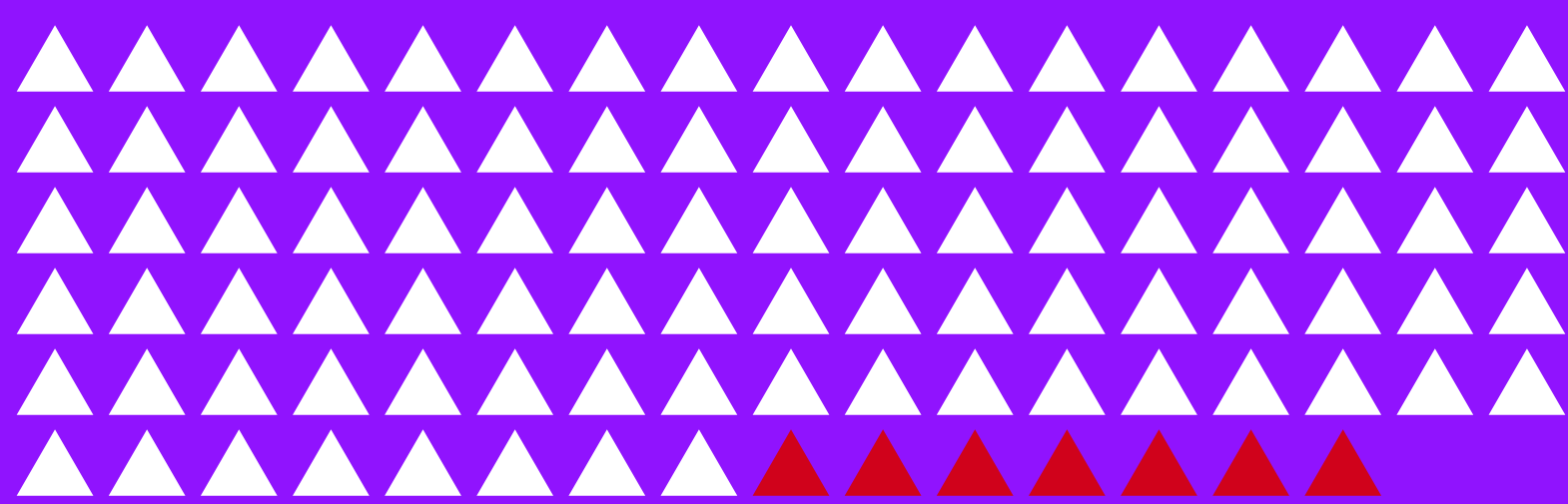
Diagnosis and Implications



#4

Decision

How many are terminated?



■ Terminate (93%) ■ Continue to Term (7%)

Though rates of termination vary depending on the disorder, approximately 58-93% are terminated.